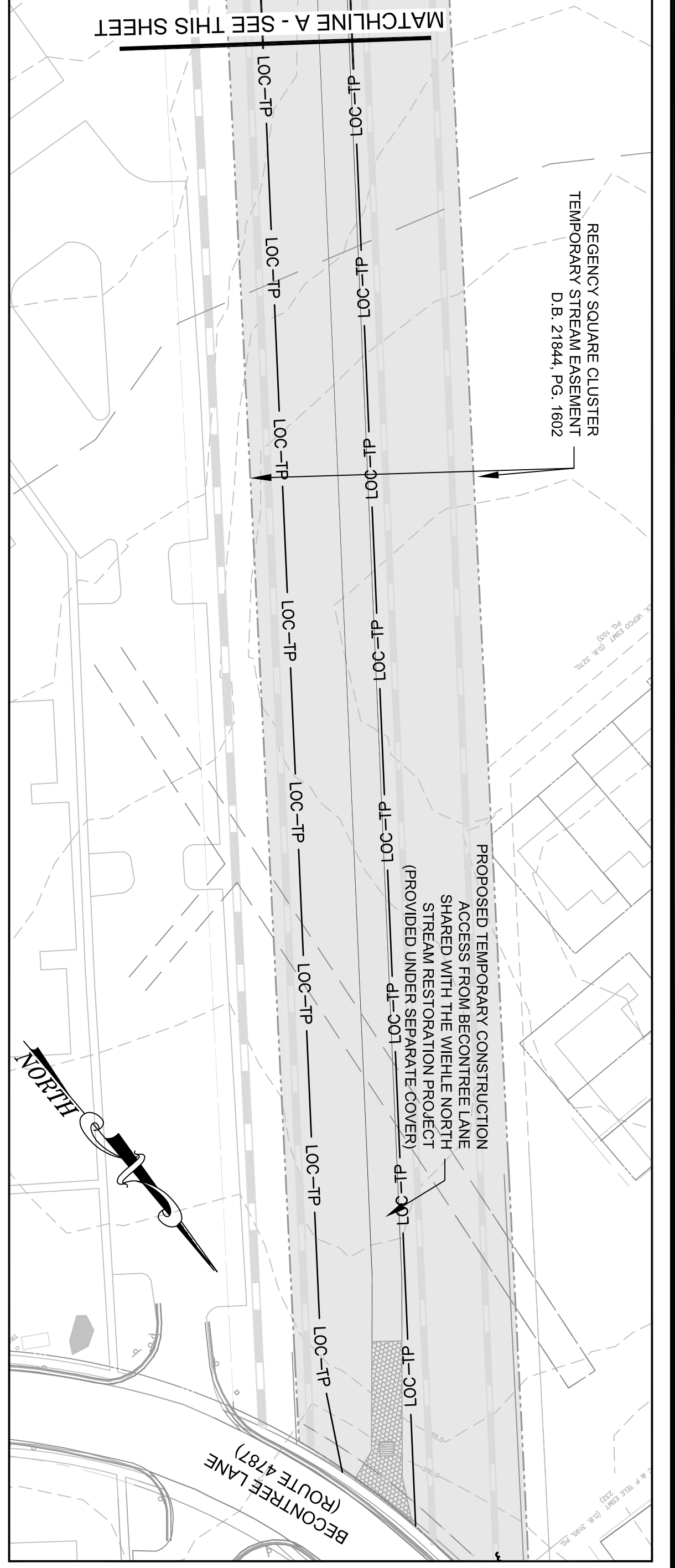
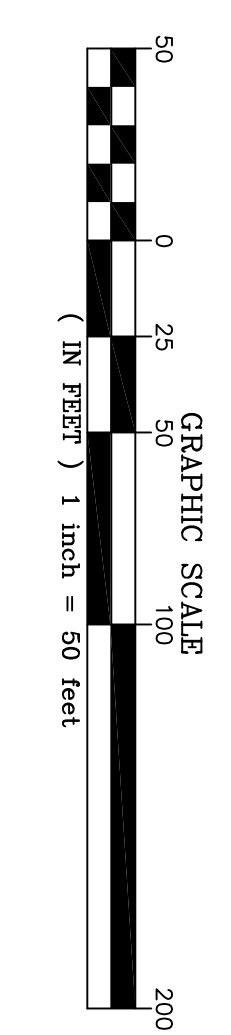




### TREE SAVE PLAN LEGEND

- PROPERTY BOUNDARY
- COMBINED STREAM ESMINT AND TEMP. GRADING & CONST. / INGRESS-EGRESS ESMINT
- STREAM ESMINT
- TEMP. GRADING & CONSTRUCTION ESMINT / INGRESS-EGRESS ESMINT
- EXISTING CONTOURS (0.5')
- EXISTING INFRASTRUCTURE
- FLOODPLAIN EASEMENT
- NON-PERENNIAL STREAM (EXISTING TOP OF BANK)
- PERENNIAL STREAM (EXISTING TOP OF BANK)
- LIMITS OF TREE SURVEY
- PROPOSED BANKFULL TOP OF BANK
- PROPOSED CENTERLINE
- PROPOSED CONTOURS (0.5')
- ACCESS PATH

- LOC-TP- LIMITS OF CLEARING / TREE PROTECTION FENCE
- LOC- LIMITS OF CLEARING
- 4'-0" CHAINLINK FENCE
- TREE TO BE REMOVED
- TREE NOT TO BE DISTURBED
- ☁ TREE DOWN, DAMAGED, OR REMOVED

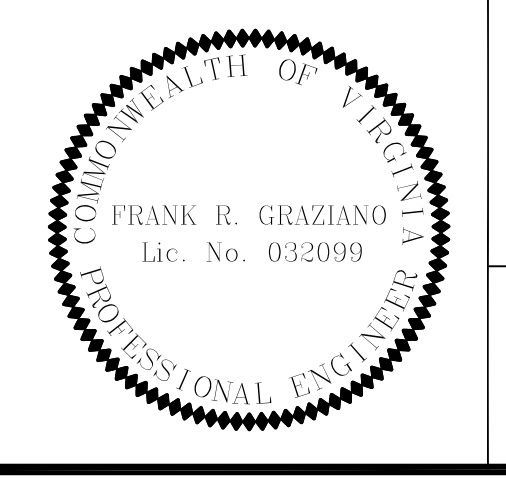


REVISIONS				
No.	Date	Description	Rev. By	App. By

Horizontal Datum: VCS NAD 83  
 Vertical Datum: NGVD 29  
 Boundary and Topo Source: WSSSI and Fairfax Digital Data

Design	Draft	Approved
KLP	KLP	FRG

DATE: AUGUST 2012      SCALE: 1" = 20'



Northern Virginia Stream Restoration Bank  
 Colvin Run - Wiehle South  
 Fairfax County, Virginia

Tree Save Plan

Copyright © 2012 Wetland Studies and Solutions, Inc.

5300 Wellington Branch Drive, Suite 100 • Gainesville, VA 20155  
 Phone 703 679 5600 • Fax 703 679 5601  
 wetlandstudies.com